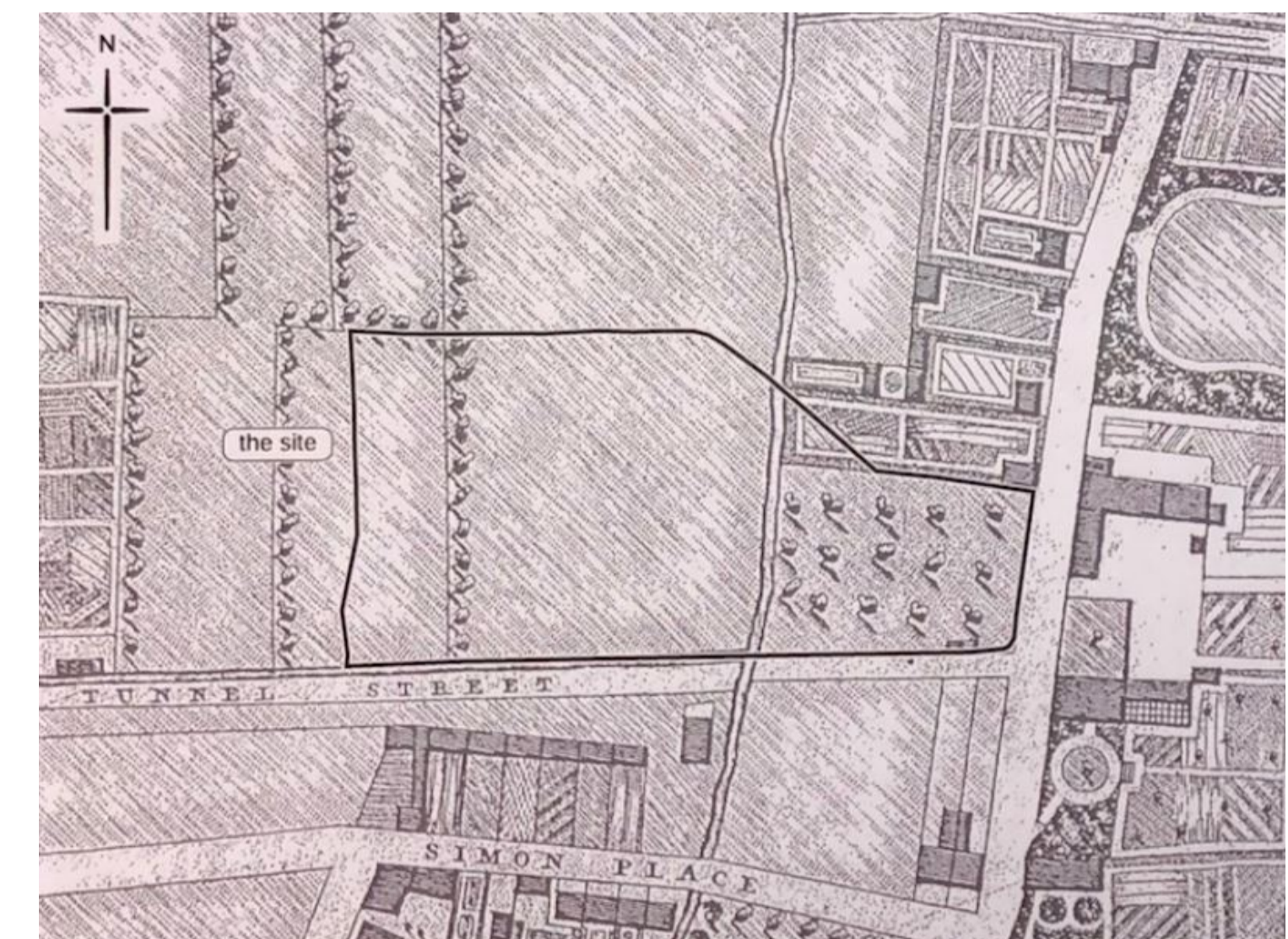


# GAS PLACE - Park Extension



## Site History

The site history has been beautifully captured by a local artist who created watercolour boards, currently installed in the existing Millennium Park. The two main images, one showing the character of the site, when it was a misty marsh and the other, of an early townscape scene, when the Gas Works started to operate.



Public Consultation

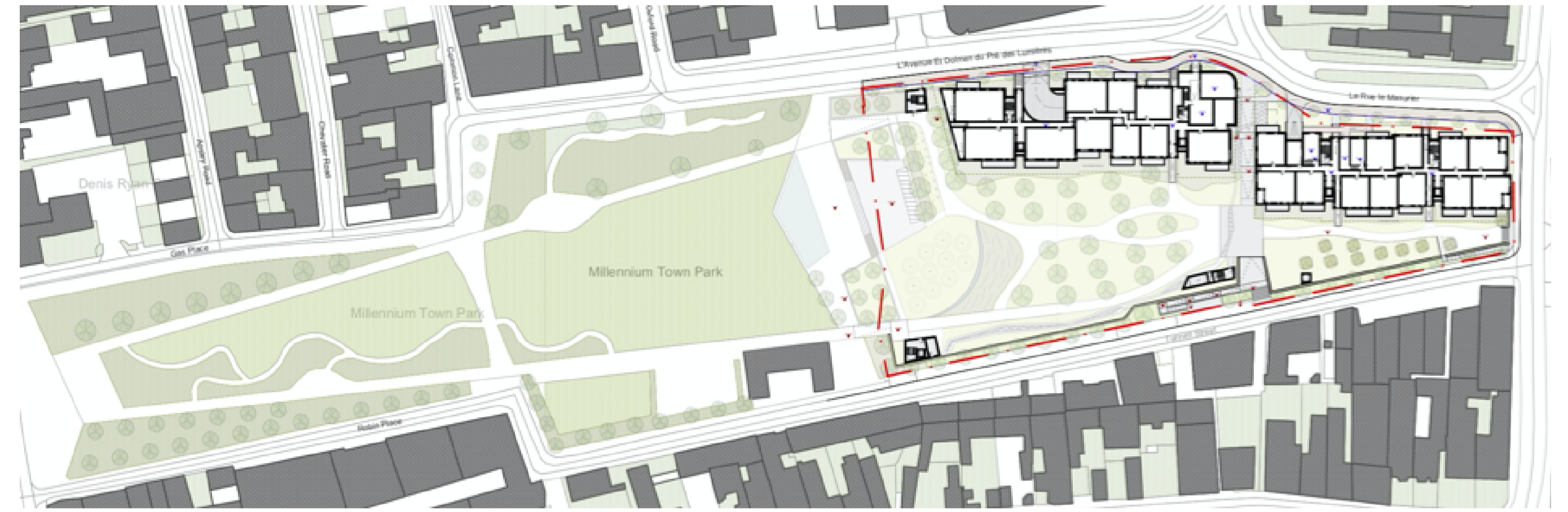


# GAS PLACE - Park Extension

## Project Background



**OPTION 5 (Including Park extension) - Chosen during the Public consultation in 2018**



**OUTLINE PLANNING APPLICATION - Approved by Planning Committee in September 2019**

EXISTING MILLENNIUM PARK OPENED

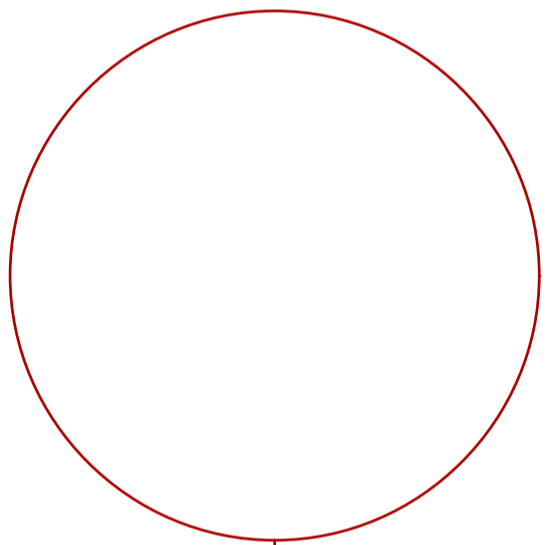
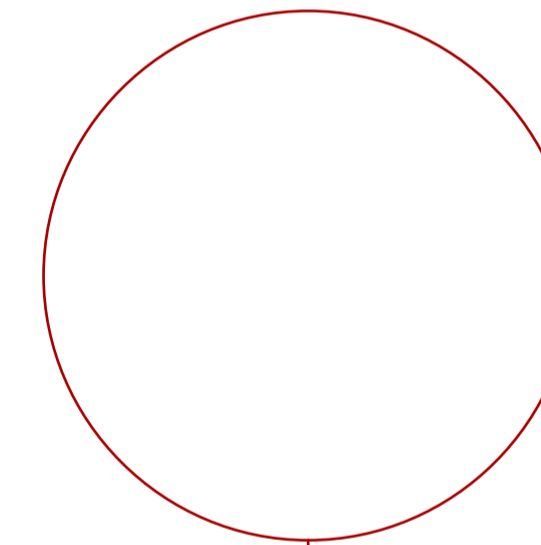
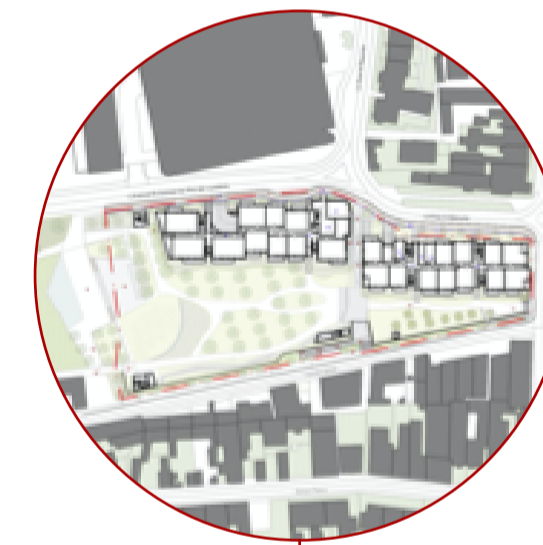
WADDINGTON ARCHITECTS - DEVELOPED OPTIONS FOR AN ALTERNATIVE DESIGN

PUT CHILDREN FIRST

OUTLINE PLANNING APPLICATION SUBMITTED  
LANDSCAPE/PARK DESIGN IS A RESERVED MATTER

PUBLIC CONSULTATION  
ON THE PARK EXTENSION

TARGET COMPLETION  
DATE



2011

2016/2017

2017/2018

OCT. 2018

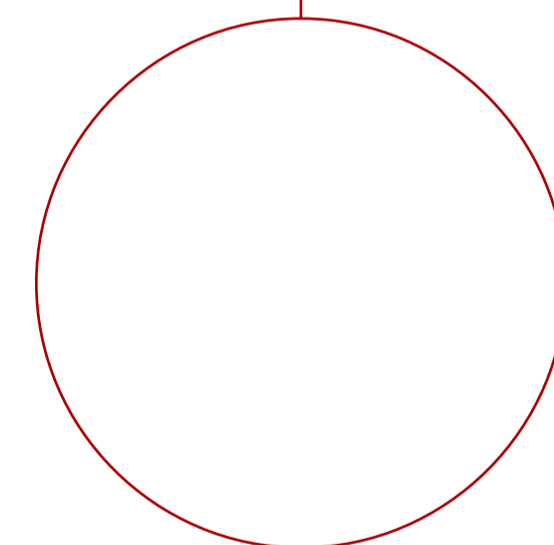
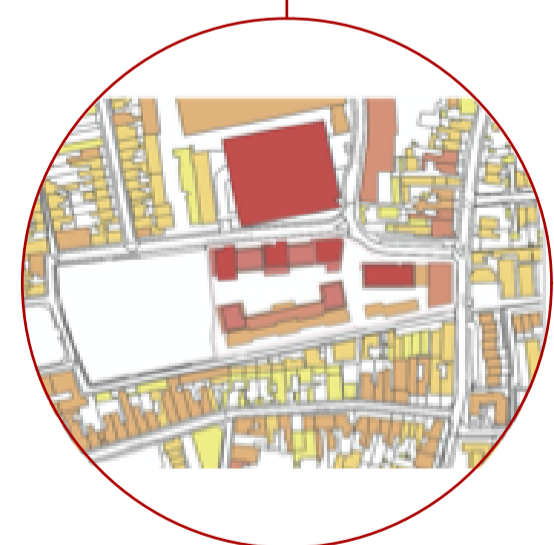
MAY 2019

SEPT. 2019

08 FEB. 2020

2020

2023



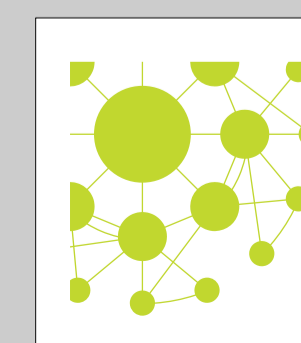
OUTLINE APPLICATION - FOR GAS PLACE DEVELOPMENT SUBMITTED AND APPROVED (WITH NO PARK EXTENSION)

PUBLIC CONSULTATIONS - OPTION 5 WITH THE PARK EXTENSION CHOSEN

PLANNING COMMITTEE - PLANNING APPLICATION WITH THE PARK EXTENSION RECEIVED FULL SUPPORT (FINAL APPROVAL SUBJECT TO PLANNING OBLIGATION AGREEMENT)

RESERVED MATTERS SUBMITTED TO PLANNING (LANDSCAPE DESIGN AND EXTERNAL MATERIALS)

Public Consultation



WADDINGTON ARCHITECTS  
INTERIORS  
LANDSCAPE  
INNOVATION

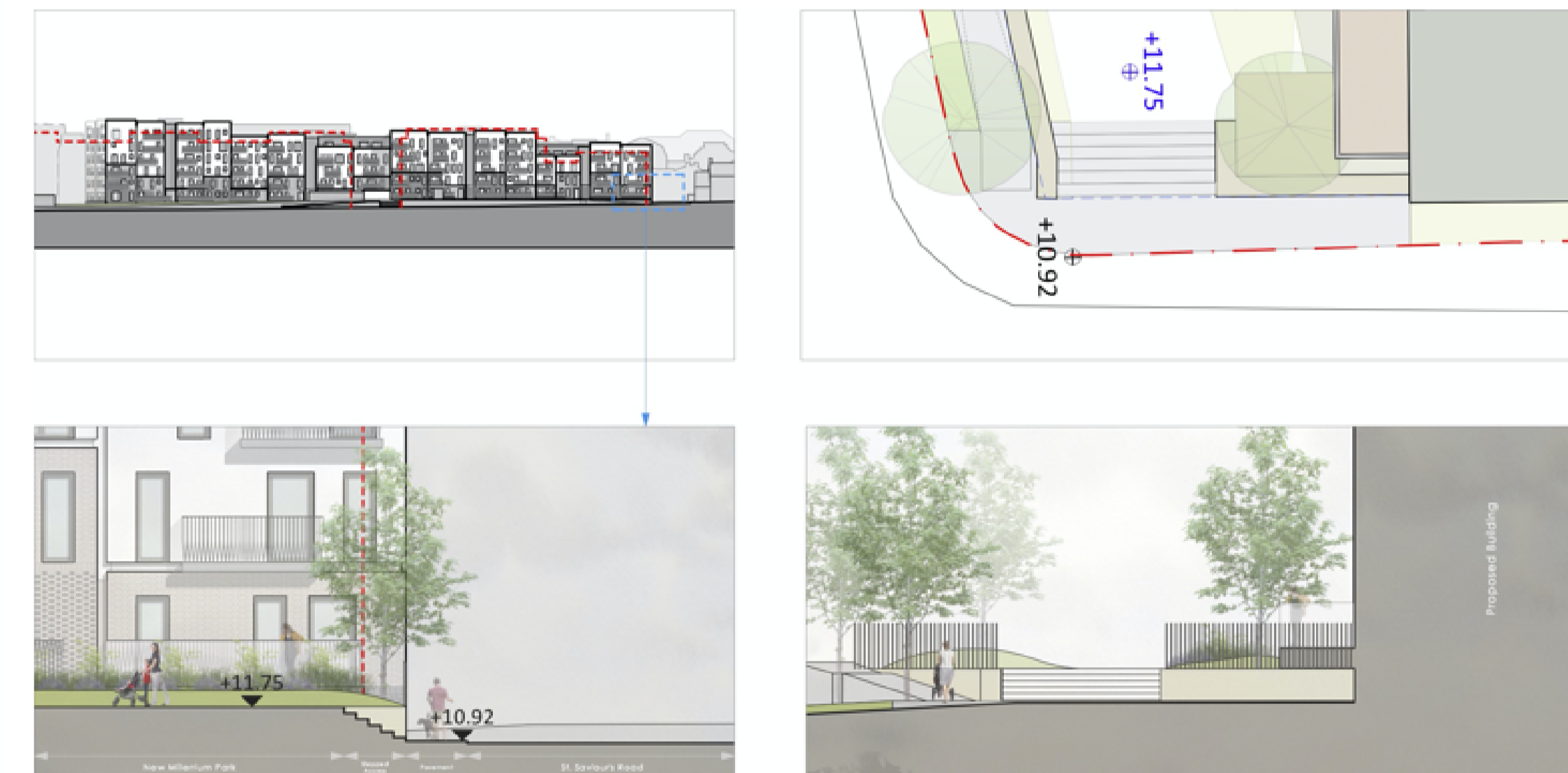
# GAS PLACE - Park Extension

## Accessability

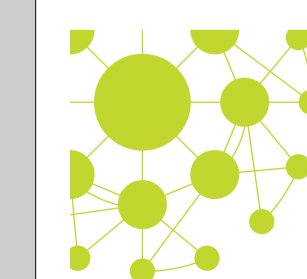


## Accessibility & Inclusive Design

Despite the change in levels between the street and the podium level, the new park will be fully accessible to all, at all access points through ramps and steps. The basement car park will be accessed via lifts and internal steps. All pedestrian crossings will be subject to technical design and Planning Application.



Public Consultation



WADDINGTON ARCHITECTS  
 INTERIORS  
 LANDSCAPE  
 INNOVATION

# G A S P L A C E - P a r k E x t e n s i o n

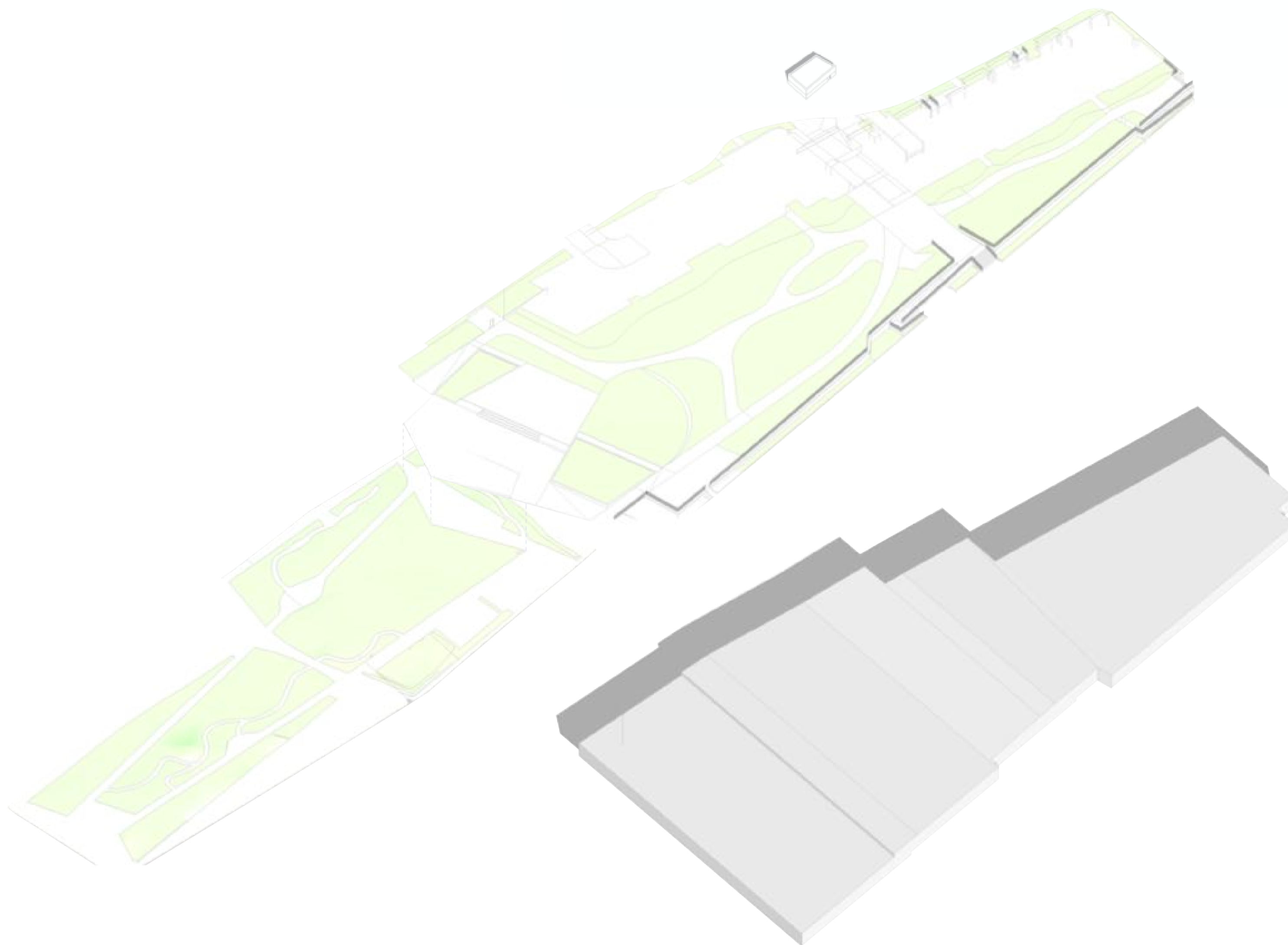


## KEY COMPONENTS:

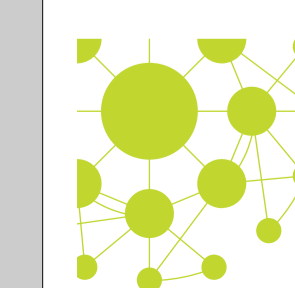
- UNDERGROUND CAR PARK (PODIUM)
- PARK AND PEDESTRIAN PATHS
- APARTMENTS BLOCKS

## KEY THEMES FOR THE PARK:

- PUTTING CHILDREN FIRST
- EDUCATION THROUGH PLAY
- REFERENCE TO THE SITE'S INTERESTING HISTORY
- INFORMAL PLAY
- PEDESTRIAN AND CYCLIST LANE IMPROVEMENTS
- ACCESSIBILITY
- SEAMLESS TRANSITION BETWEEN EXISTING AND NEW
- SOUTH-FACING 'HUMAN SCALE' SPACES
- WELLBEING

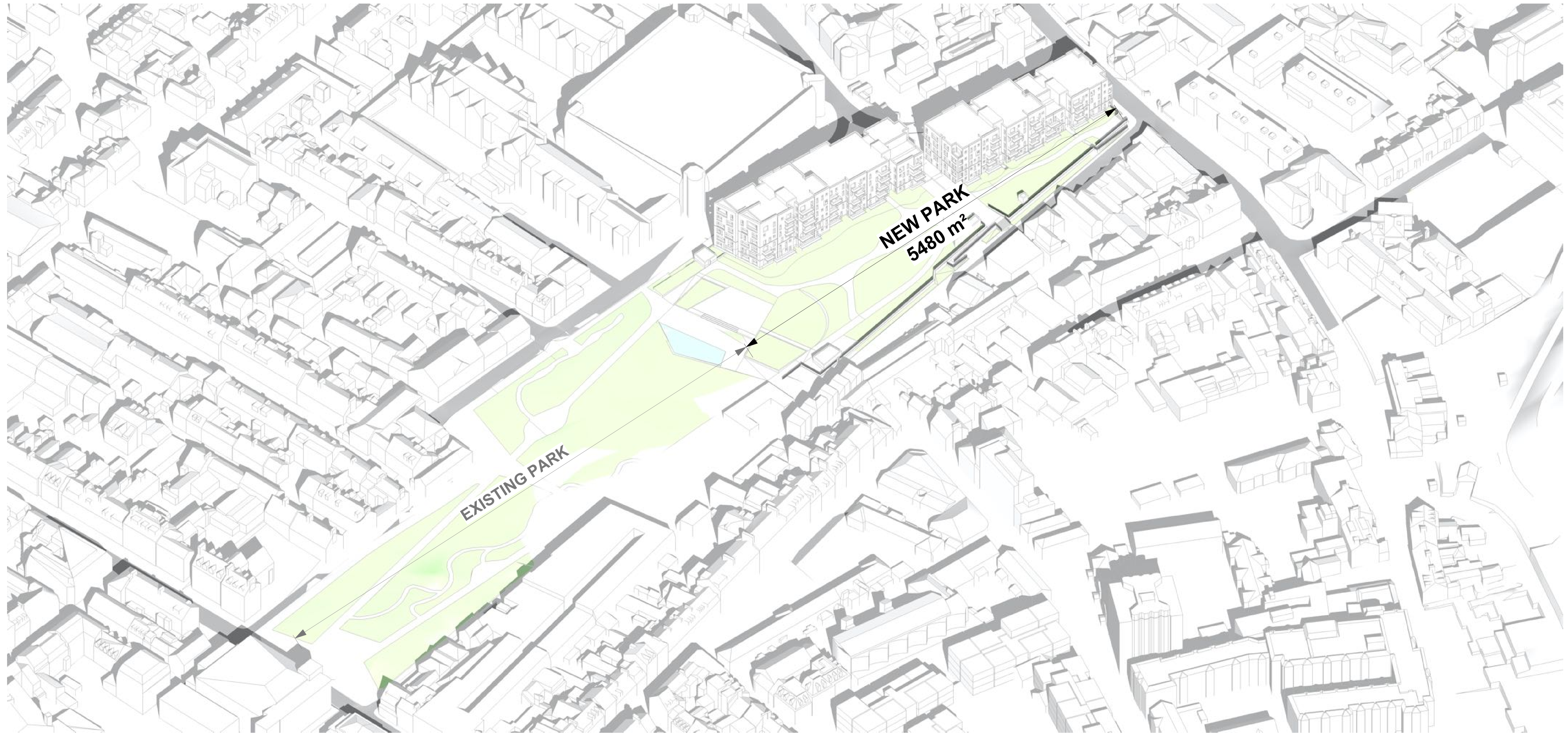


Public Consultation

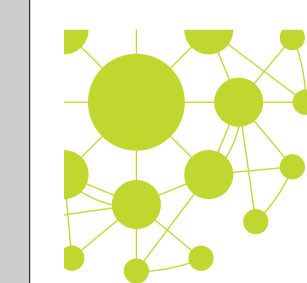


WADDINGTON ARCHITECTS  
INTERIORS  
LANDSCAPE  
INNOVATION

# GAS PLACE - Park Extension



Public Consultation



WADDINGTON ARCHITECTS  
INTERIORS  
LANDSCAPE  
INNOVATION

# GAS PLACE - Park Extension

## EXISTING PARK FEATURES/FUNCTIONS



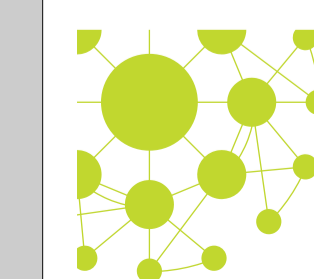
### Millennium Town Park facilities

The park was designed after extensive consultation. Its modern design aims to meet the needs of the community and includes the following features:

1. Interactive water feature
2. Water curtain
3. Sculptures
4. Large grass area suitable for picnics
5. Formal playground suitable for toddlers and children
6. Petanque area
7. Ball practice area
8. Toilets (including disabled and baby changing facilities)
9. Wheelchair friendly access
10. Cafe nearby (and a seasonal cafe in the park)



Public Consultation



WADDINGTON ARCHITECTS  
INTERIORS  
LANDSCAPE  
INNOVATION

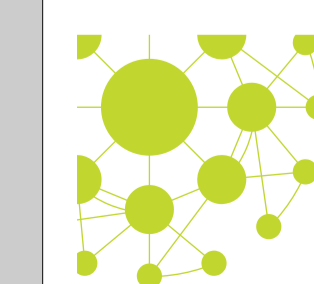
# GAS PLACE - Park Extension



## OPTIONAL PARK FEATURES

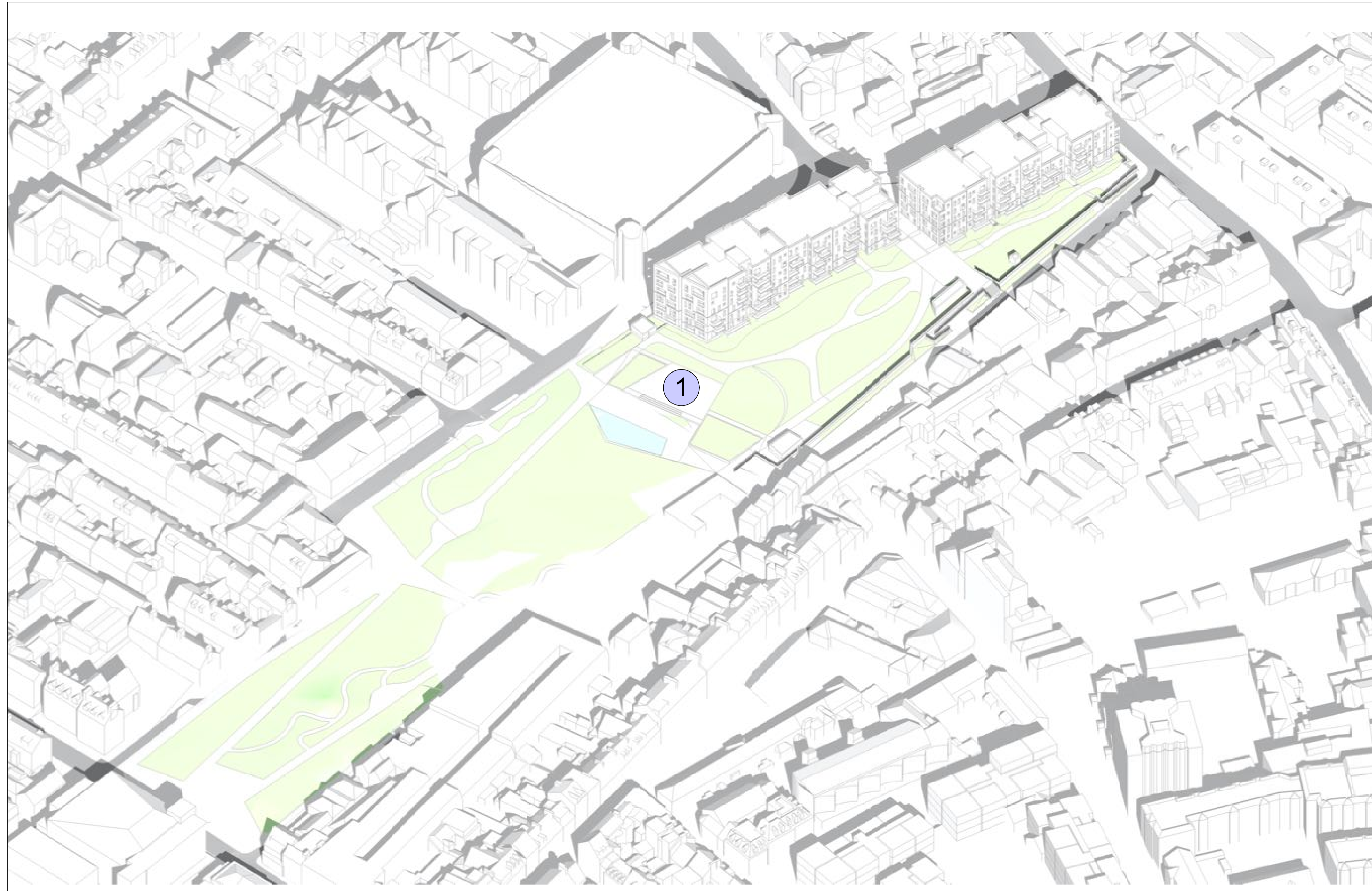
- FEATURE 1:** Plaza & Amphitheatre
- FEATURE 2:** Bees & Bugs
- FEATURE 3:** Dolmen Avenue
- FEATURE 4:** False Brook
- FEATURE 5:** Misty Marsh
- FEATURE 6:** Children's Running Track
- FEATURE 7:** Informal Play
- FEATURE 8:** Picnic Areas
- FEATURE 9:** Streetscape & Cycling

Public Consultation



WADDINGTON ARCHITECTS  
INTERIORS  
LANDSCAPE  
INNOVATION

# GAS PLACE - Park Extension

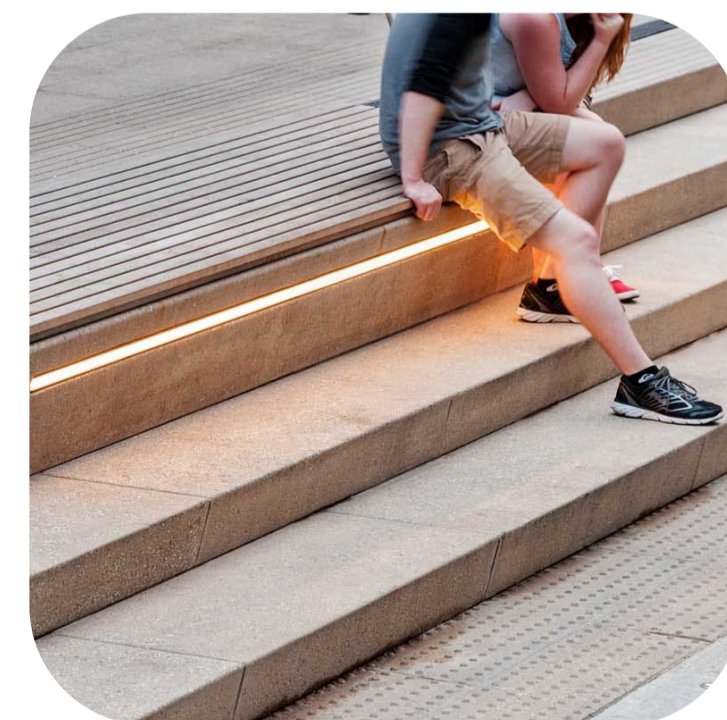


## FEATURE 1: Plaza & Amphitheatre

The existing Plaza with water jets will be extended to create a better and larger open space for play, events and gatherings.  
The two interlocking plazas will become the linking elements between existing and new park and create an opportunity to become the heart and hub for all kinds of activities.



The change in levels allows to create steps and small amphitheatre on which people can sit, enjoy the sunshine and watch their children playing.



Public Consultation





# GAS PLACE - Park Extension



## FEATURE 2: Pollinator garden

We all know how important the bees are in the world.  
Let's teach our children about them and enjoy a colorful scented perennial garden.



Public Consultation



# GAS PLACE - Park Extension

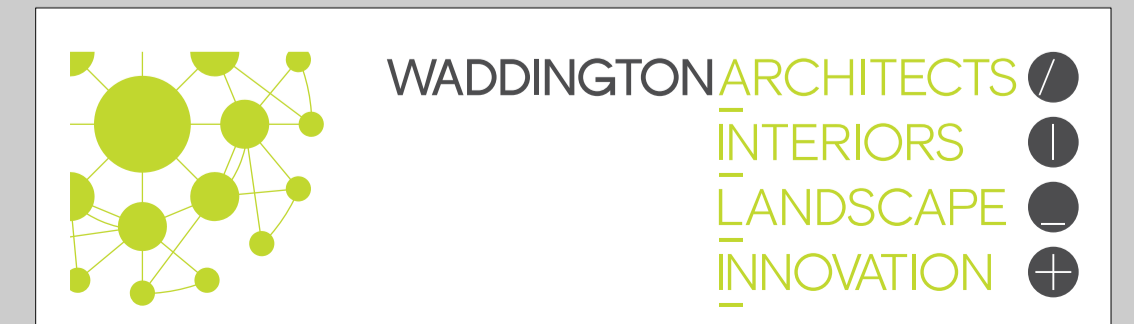


## FEATURE 3: Dolmen Avenue

An ancient Dolmen Avenue was discovered near the site. Let's re-create the old feature to commemorate the site history but in a playful way. Big boulders can become not only historic reference features but also a simple informal play trail.



Public Consultation



# GAS PLACE - Park Extension



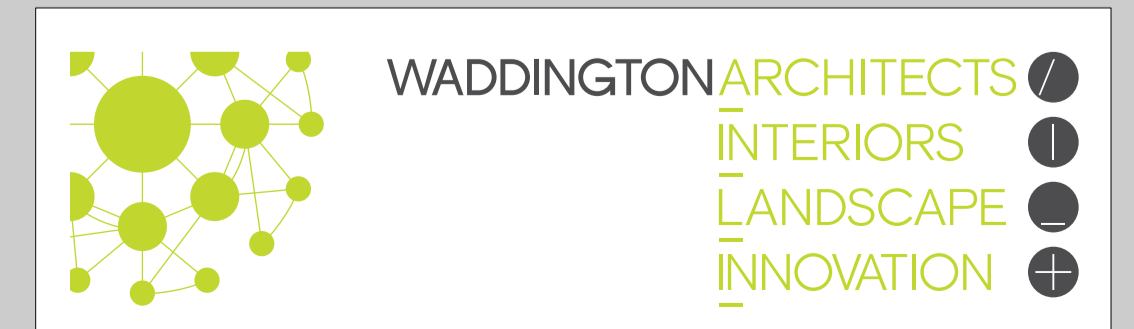
## FEATURE 4:

The existing Brook, running through the middle of the site will be culverted underground and relocated. The history of the brook goes back centuries, well before the town expanded to the north. The passive water feature will rely only on rain water and gravity. It will remind us all of the site history, create a playful feature and a different habitat.

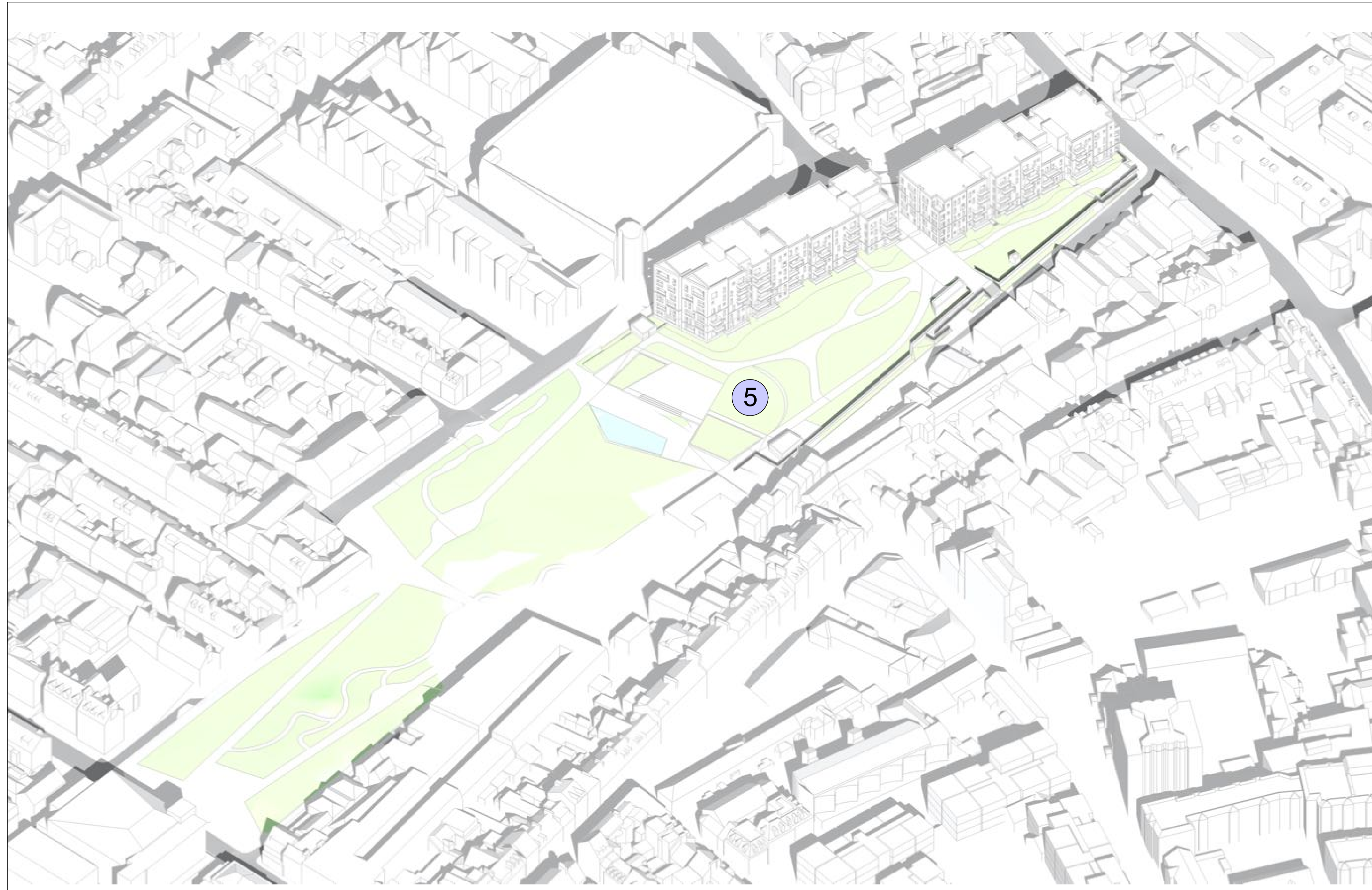


Photo of existing paving feature in the pedestrian link referring to the culverted stream route

Public Consultation



# GAS PLACE - Park Extension



## FEATURE 5: Misty Marsh

Around 1800BC, this area of town was wet marshland covered by mist, before it was claimed back and dried out by culverting the water. The play area with mist is a great way to engage children through informal play and teach them about the town's history. This feature could potentially become Clinton Pringle's memorial and contribute to the informal play elements of the park.



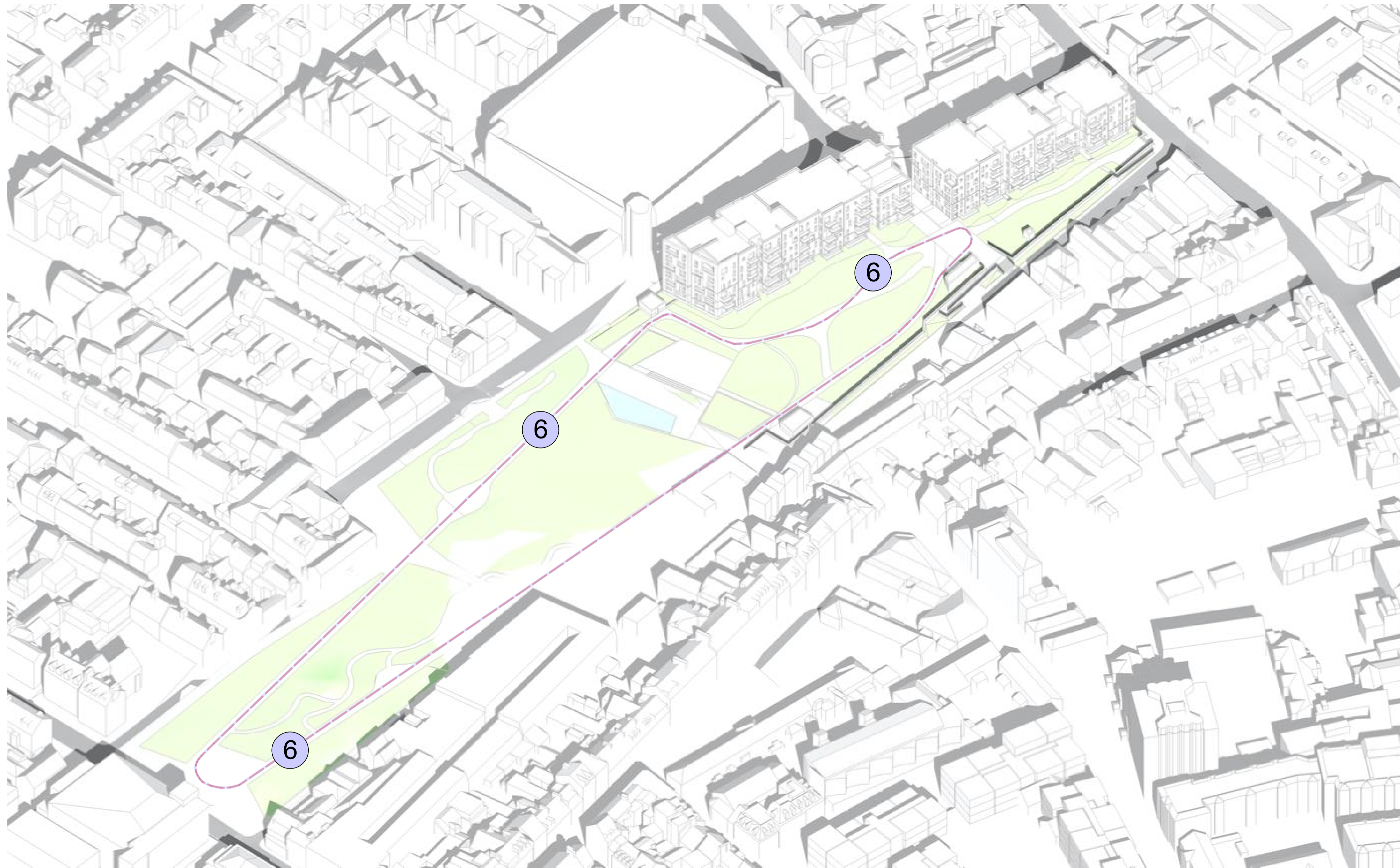
It was not only misty, but also mystical, with legends about ghosts and paranormal activities. That was probably due to a combination of the mist and electrical discharges (a common occurrence on marshlands due to released gases).



Public Consultation

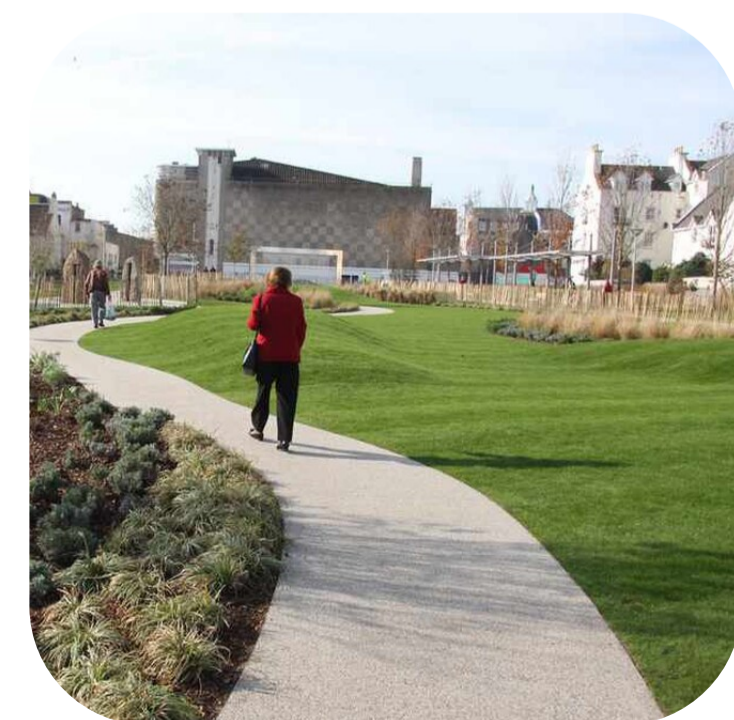


# GAS PLACE - Park Extension

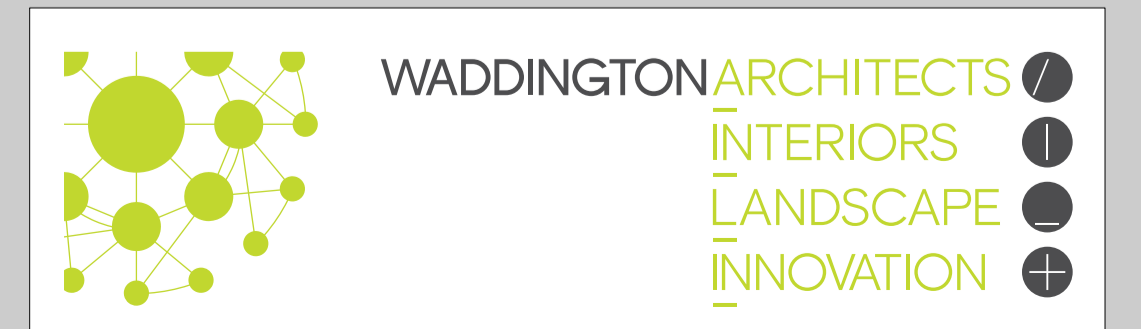


## FEATURE 6: Children's Running Track

By extending wide paths, we will create an opportunity for a short running circuit around the park (which can be used everyday by residents or for more formal events). The children's park run track distance is a 2km long loop.



Public Consultation



# GAS PLACE - Park Extension



## FEATURE 7: Informal Play

Areas of informal play designated for smaller children can be scattered around the park. Together with natural materials and soft colourful planting they will give a different multisensory experience, in contrast with the restricted formal play equipment.



Public Consultation

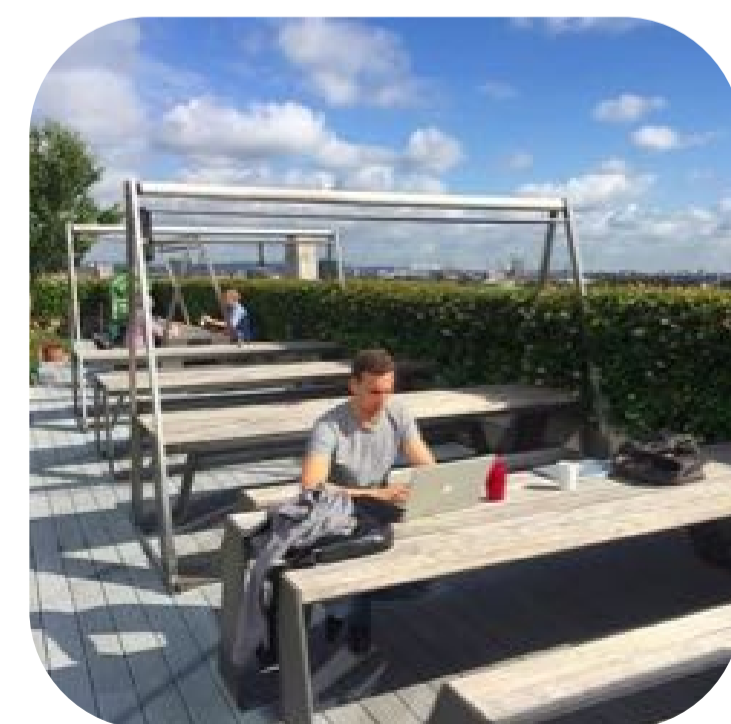


# GAS PLACE - Park Extension

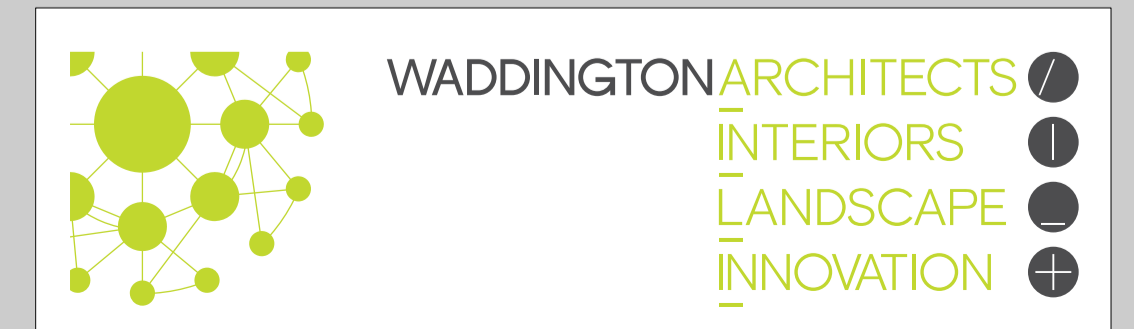


## FEATURE 8: Picnic areas

Areas with tables and benches can be provided and used for picnicking, playing games, learning or outdoor classes.



Public Consultation



# GAS PLACE - Park Extension



## FEATURE 9: Streetscape & Cycling

Additional cycle loops could be created at the Park entrance from St. Saviours road and by other entrances as/where required.



Public Consultation

